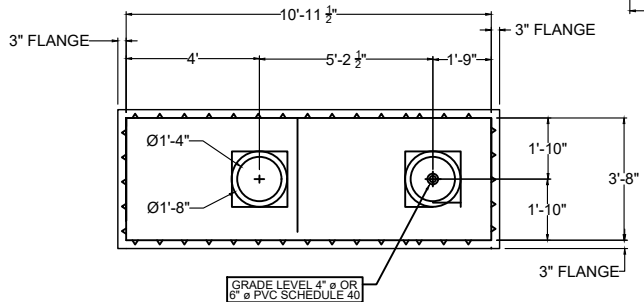
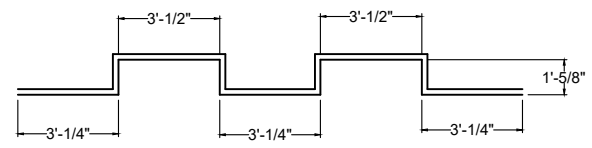


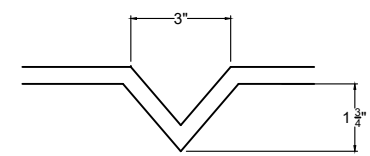
TANK PLAN VIEW W/OUT COVER



GRADE LEVEL 4" Ø OR 6" Ø PVC SCHEDULE 40



BAFFLE RIB DETAIL (LID LONG SECTION)

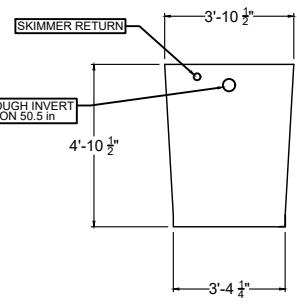


BAFFLE RIB DETAIL SCALE: N.T.S

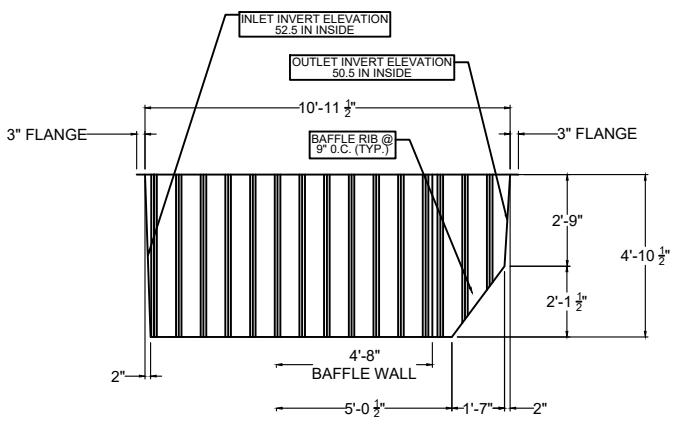
EFFECTIVE CAPACITY 1133 GALLONS  
 AIR SPACE 200 GALLONS  
 APPROVAL NUMBER 70-114-AK6S-C3  
 FIBERGLASS TANK, MONOLITHIC BAFFLES, HOUSES  
 AquaKlear AK6S245F ATU (600 gal/day), NSF245-CERTIFIED.  
 1/2" AIRLINES COMING THROUGH RISER.  
 FLORIDA DEPARTMENT OF HEALTH AUGUST 5, 2019

1. ALL WALL THICKNESS TO BE 3/16"
2. BAFFLE RIBS TO BE AT 9" SPACING MAX.
3. TOLERANCE: ±1/4"

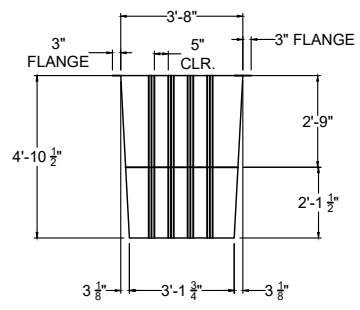
MATERIAL SPECIFICATION



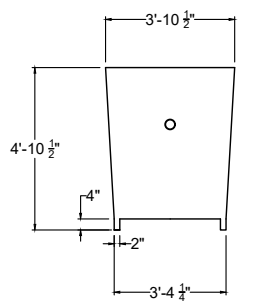
BAFFLE WALL #1 DETAIL



ELEVATION VIEW



RIGHT SIDE ELEVATION VIEW



BAFFLE WALL #1 DETAIL

**AQUAKLEAR**  
 WASTEWATER TREATMENT SYSTEM  
 MODEL AK6S245 F  
 NOT TO SCALE